

Best of Both Worlds

OPTION 1

Start as an Employee

Not every technician decides to go the route of booth rental. That's ok too! We help technicians get started in the industry and achieve the level of success you desire.

- Extremely Competitive Pay (50%+ to start)
- Hourly Guarantee (to help get you started)
- Paid Vacation Time (Part and Full Time)
- Health & Dental Insurance
- Mentoring & Training

Then, IF you want...

Become your own boss, without leaving

For those who dream of independence, our hybrid spa allows you to transition over to booth rental with ease when you are ready and IF you decide it is right for you.

- Keep 100% of your earnings
- Set your own hours
- Choose your own services & pricing
- Clients continue to visit you at the same place
- Keep using our included booking software
- Don't have to use your own cell phone = clients aren't bugging you at all hours
- Reception, Laundry and Cleaning all still continue just the same as before.
- Keep working in an environment with other like-minded owners and employees side-by-side

OPTION 2

Start as an Owner

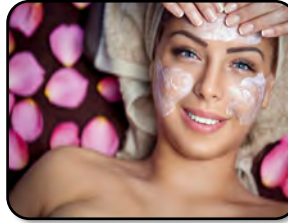
Already have clients but looking for a new better way to run your business? Bring your clients and take advantage of our added benefits to allow you to spend more time with clients and less time worrying about the administrative details. Even gain new clients to help offset clients who move away by operating in a busy spa environment.

Let's do the math...

Opportunities in all Departments



Hair Stylists/Colorists



Estheticians



Massage Therapists



Nail Technicians

Get Started Today!

(331) 212-6939

Direct Business Office Line

PremierMassage.net

©2022 A Premier Massage & Day Spa, Inc.

A Premier Massage
& Day Spa

Introducing a
NEW Hybrid Spa Concept
Employees + Booth Rental
Collaborative & Inclusive

Unlike any other Spa Experience

Start as an Employee - Build Clients & Perfect your craft

- Build your Clientele' w/Great Pay (50%+)
- Get Mentoring & Training
- Learn about the business
- Fill your client books
- Flexible scheduling to suit your life
- Stay an employee if preferred, or...

Become an Owner - Move to Booth Rental when..if ready

- You keep 100% of earnings
- Continue seeing clients in same space
- Set your own hours & prices
- Supply Backbar or use ours
- Still enjoy a collaborative spa environment

Over 17 Years serving our industry
(331) 212-6939 Premiermassage.net

We're Here to Support YOUR Chosen Career Path

Not every technician is going to follow the same path...and that is ok, in fact, it is great! Each technician needs to find their own way.

We are here to support you in that process and to help you grow. This is far different than either traditional spa model.

Below we break down just a few of the initial costs, as well as the ongoing expenses associated with each model.

Initial Investment Comparison:

	Typical Salon (Employee)	Typical Suite Rental	Our Elevated Booth Rental
Linen Supply	\$0	\$200-300 (low end)	FREE
Backbar Products	\$0	\$3000-5000	Option to use ours
Security Deposit	\$0	\$600+	\$0
TOTALS:	\$0	\$3800-5900+	\$0*

Earnings Comparison:

	Typical Salon (Employee)	Typical Suite Rental	Our Elevated Booth Rental
Gross Service Totals	\$5,500/mo	\$5,500/mo	\$5,500/mo
Commission	-\$3,025		
Booth Rent (Weekly)		-\$300/week ¹	-\$350/week ²
Booking & Business Management Software	Included	-\$49+/mo	FREE
Laundry Services	Usually, it's you	-\$15+/week & 4+ Hours of your time	FREE (+It's Done for you)
Web Presence		-\$10+/mo + hours of time	FREE
Booking Appointments	Included	All Hours on your cell phone	FREE
Refreshments for Clients	Included	-\$50+/mo (low end)	FREE
Disinfection processes & supplies	On your own	\$10+/week	FREE
Janitorial Services	Usually, it's you	\$75+/week and/or 2 hours of your time	FREE
Marketing and Online presence to reach new clients regularly	YES	NO	YES
Approx. Monthly Profit:	\$2,475	\$3,791	\$4,100

Approx monthly profits based on approximate numbers, actual results may/will vary. Calculation based on month with 4 weeks where weekly expenses are used to calculate. *Option to use our backbar for technicians that use our booking software, cost per service for backbar used billed at end of month. ¹Average of area booth and suite rentals used as a reference ²Based on a typical 32 hour schedule, actual weekly rent will vary based on rates and hours selected at time of application and available hours. Ask for latest detailed hours

**Keep more + More time
doing what you LOVE!**